

## Product data

### Track Driver

30W DALI/RGBW Dim 3 phase 6 wire Constant Current LED Driver

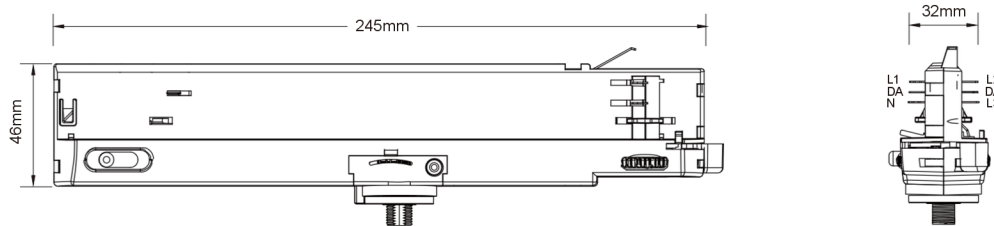


#### Features

- Built-in Track Adaptor
- Flicker free
- Power Factor Corrected (>0.9)
- Compatible with Brand Tracks, refer to data sheet page 3
- For luminaire of protection class I
- Temperature protection as per EN 61347-2-13 C5e
- Output current Max 700mA
- Nominal lifetime up to 50,000 H or 5 years guarantee
- Over-temperature protection
- Over-load protection
- Short-circuit protection
- No-load protection
- Burst protection voltage 2 kV
- Surge protection voltage 500 V (L to N)
- Casing color: Black / White / Grey



#### Size



length	245 mm
width	32 mm
height	46 mm
Geometry (l x w x h)	245 x 32 x 46mm
Package size	59 x 25 x 21cm
Quantity	50pcs/ box



## Product data

### Electrical parameters

Nominal Input Voltage	220 – 240V <sup>AC</sup>
Line Current, nominal	0.16A MAX.
Mains Frequency	50/60 Hz
Rated Power factor	> 0.9 (full load) @ 230V
Power Loss in no load condition	<0.5W
Protection Class	I
Output Current	Max 700mA(R-140mA/G-140mA/B-140mA/W-280mA)
Output voltage	20–40V <sup>DC</sup>
(Remark)	Maximum < 47V <sup>DC</sup>
Output Power	Maximum 30W
No-load proof	Yes
Short circuit protection	Automatic, reversible
Overload protection	Automatic, reversible
Over temperature protection	Automatic, reversible
Ambient temperature range, t <sup>a</sup>	-20 °C to +35 °C
Max. case temperature at t <sup>c</sup> point	85 °C
Dimming Range	Normal 0.1%.....100% full load condition at 230V
ECG Lifetime (Remark)	50,000h or 5 years Fail rate < 3% at use of Under normal conditions
Cable cross section input side & output side	0.5-2.5mm
(Remark)	Solid and flexible
Wire preparation length Input side & output side	7-8 mm
Safety Standard	IEC 61347-1:2015 ; IEC 61347-1:2015/AMD1:2017 ; IEC 61347-2-13:2014 ; IEC 61347-2-13:2014/AMD1:2016
Radio interference EMC Launch EMC immunity	EN IEC 55015:2019 ; EN IEC 55015:2019/A11:2020 EN 61547:2009 ; EN IEC 61000-3-2:2019/A1:2021 EN 61000-3-3:2013/A2:2021
Surge capability	L-N:500V
Galvanic isolation primary/secondary	3.75 kVrms SELV-equivalent

### Wiring guidelines

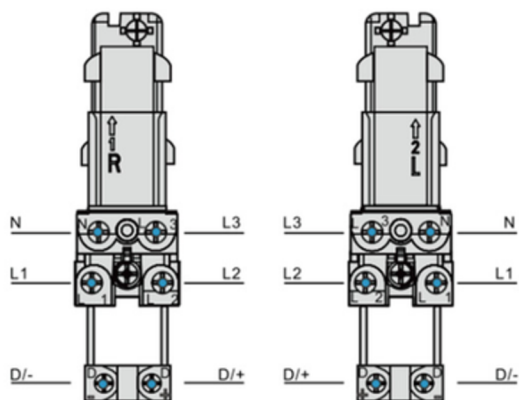
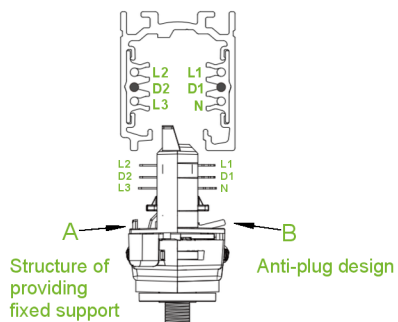
- All connections must be kept as short as possible to ensure good EMI behaviour
- Max. length of output wires is 20 cm
- Secondary switching is not permitted
- Incorrect wiring can damage LED Driver
- It is not allowed to exceed the max ambient temperature (ta) stated on the device
- To avoid the damage of the Driver, the wiring must be protected against short circuits to earth (sharp edged metal parts, metal cable clips, louver, etc.)



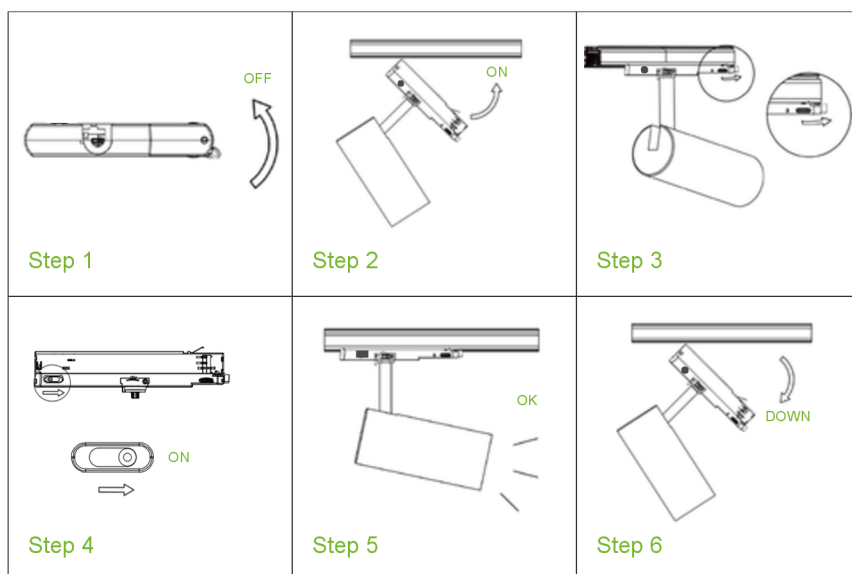
## Product data

Installation Diagram(Insert the adapter into the track)

- Max. allowed weight of complete luminaire: 5 kg (50 N). It is valid for horizontal mounting of track system only
- The mechanical key (A) is structure of providing fixed support.
- The mechanical key (B) is anti-plug design.
- To open rotate the lever the opposite direction



## Mounting luminaire



## Model List

Model	Input Voltage(V)	Output current mt(mA)	Ouput Voltage(V)	PPFF	Efficiency	Flicker	Size(L x W x H)
30W	220~240V	W280mA/RGB140mA	20-40V	>0.9	85%	Flicker-Free	245 x 32 x 46mm

