

Driver+ Dimmer 2 in 1 Constant voltage SDD-EU-CCT series 100W PWMoutput

SDD-EU-CCT series

Whole Family: SDD-EUxxxx-CCT

DC- (24V / 48V) [60W 100W]



RoHS



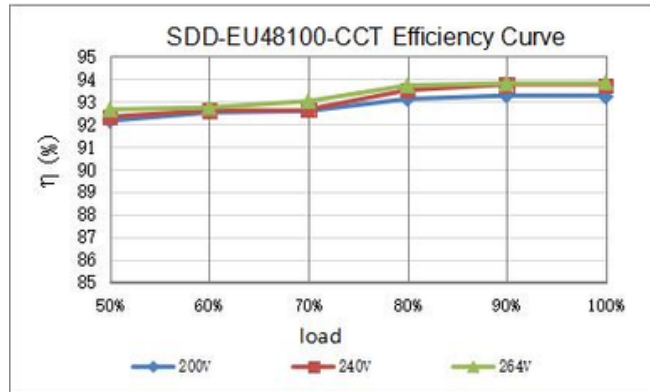
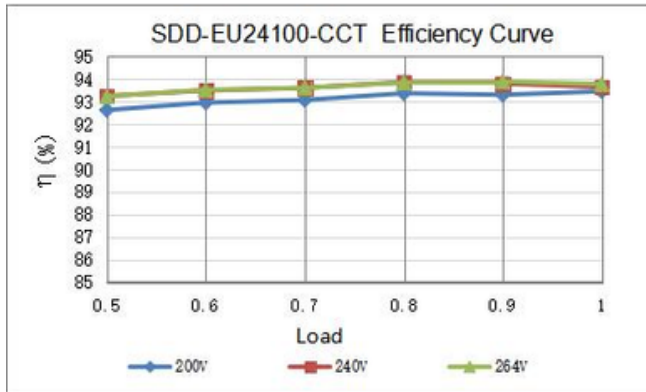
Features

- Output: Constant Voltage
- Input Range: 200-240VAC
- PFC design: Built-in active PFC function
- Protections: Short circuit/ Over load/ Over temperature
- Heat dissipation: Cooling by free air convection
- Waterproof performance: IP20
- Design features:
 - 1) Fine-tune output voltage can be adjusted slightly
 - 2) Preset dimmer with knob encoder
 - 3) Press standby function
 - 4) Dimming and color temperature adjustment function.
- Dimming range: 0.5%-100%
- Application: Suitable for the application of LED lighting
- Warranty: 5 years warranty
- Others: 16KHZ PWM output with dimming curve is a gamma 2.2 curve Flicker-free

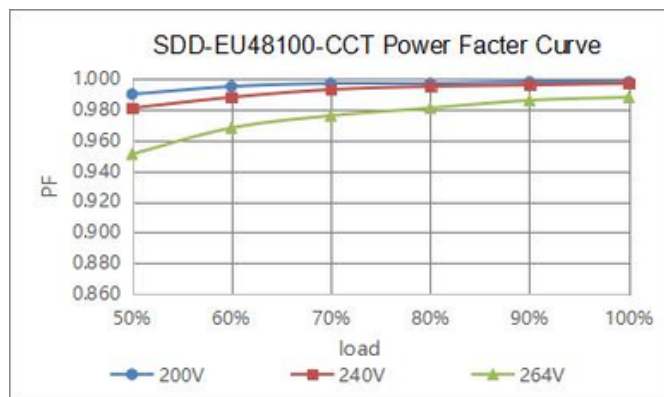
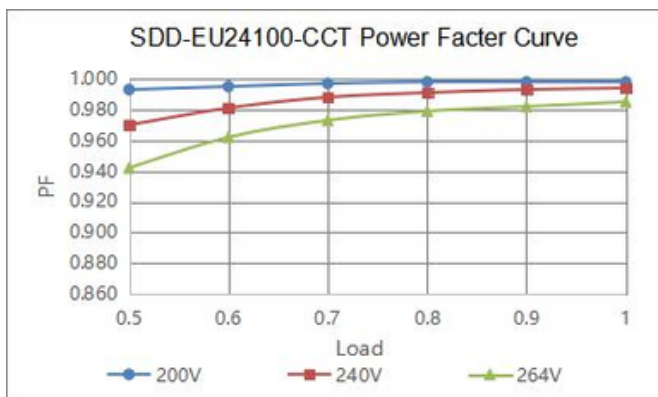
Specification

Model		SDD-EU24100-CCT	SDD-EU48100-CCT
Certificate		SELV / CE / ENEC / RoHS / REACH	
Output	DC Rate Voltage	24V (24V-26Vadjustbyknob)	48V (48V-50Vadjustbyknob)
	VoltageTolerance	±0.5V	
	LoadRegulation	≤1%	
	LineRegulation	≤0.5%	
	Ratedcurrent	4.17A	2.08A
	Ratedpower	100W	100W
Input	VoltageRange	200-240VAC	
	FrequencyRange	47-63Hz	
	PowerFactor@fullload	≥0.95	
	THD(Typ.)@fullload	≤20%	
	Efficiency@fullload	92.0%	93.0%
	ACCurrent(Max.)	0.55A	0.55A
	InrushCurrent(Typ.)	50A,150us@50%Ipeak	
	Leakagecurrent	<0.5mA	
Protection	ShortCircuit	Hiccupmode,recoversautomaticallyafterfaultconditionisremoved	
	OverLoad	≥110%Constantcurrentmode,recoversautomaticallyafterfaultconditionisremoved	
	Over temperature	Shell surface temperature 100°C±10°C shut down o/p voltage, automatically recover after cooling -40~+50°C(seebelowderatingcurve)	
Environment	WorkingTEMP.		
	WorkingHumidity	20-95%RH non-condensing	
	StorageTEM.,Humidity	-40~+80°C,10-95%RHnon-condensing	
	TEMP.coefficient	±0.03%/°C(0-50°C)	
	Vibration	10~500Hz,2G12min./1cycle,periodfor72min.eachalongX,Y,Zaxes	
Safety & EMC	Safetystandards	EN61347-1 EN61347-2-13(EU)	
	Withstandvoltage	I/P-O/P:3.75KVACI/P-FG:1.88KVACO/P-FG:0.5KVAC(EU)	
	Isolationresistance	I/P-O/P:100MΩ/500VDC/25°C/70%RH	
	EMCEmission	EN55015 EN61000-3-2,3(≥50%load)(EU)	
Others	NetWeight	0.25KG	
	Dimension	86*86*55.4mm/ 3.386"x3.386"x2.186"(Inch)	
	Packing		
Notes	<ol style="list-style-type: none"> AllparametersNOTspeciallymentionedaremeasuredat240VACinput,ratedloadand25°Cofambienttemperature. Tolerance:includessetuptoleranceandloadregulation. 		

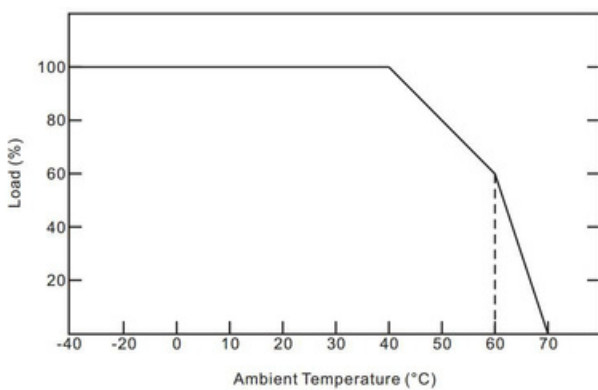
Efficiency Curve (efficiency vs output load)



Power factor curve

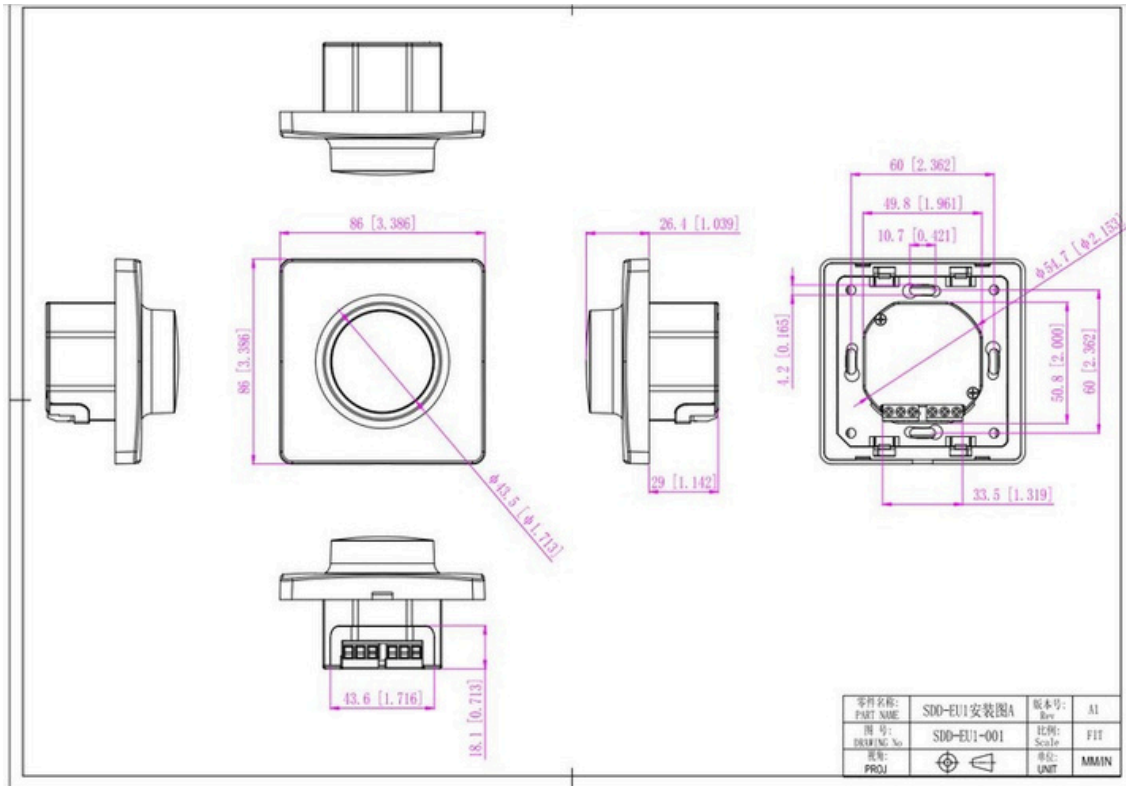


Derating Curve (Output power VS Ambient TEMP)



- To extend their life, please refer to the Derating Curve and derate according to the temperature.
- The output current of the dimmer should be selected according to the rated current of the lamp and the ambient temperature. Normally, we recommend the dimmer to reserve a certain amount of load to extend dimmer's life .

Mechanical Specification

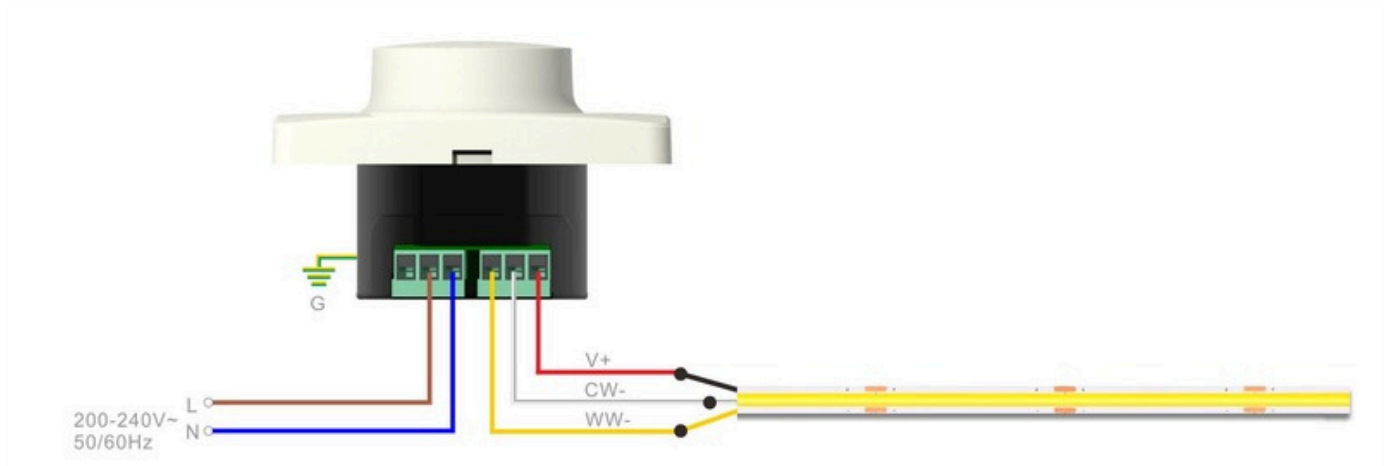


Warm tips:

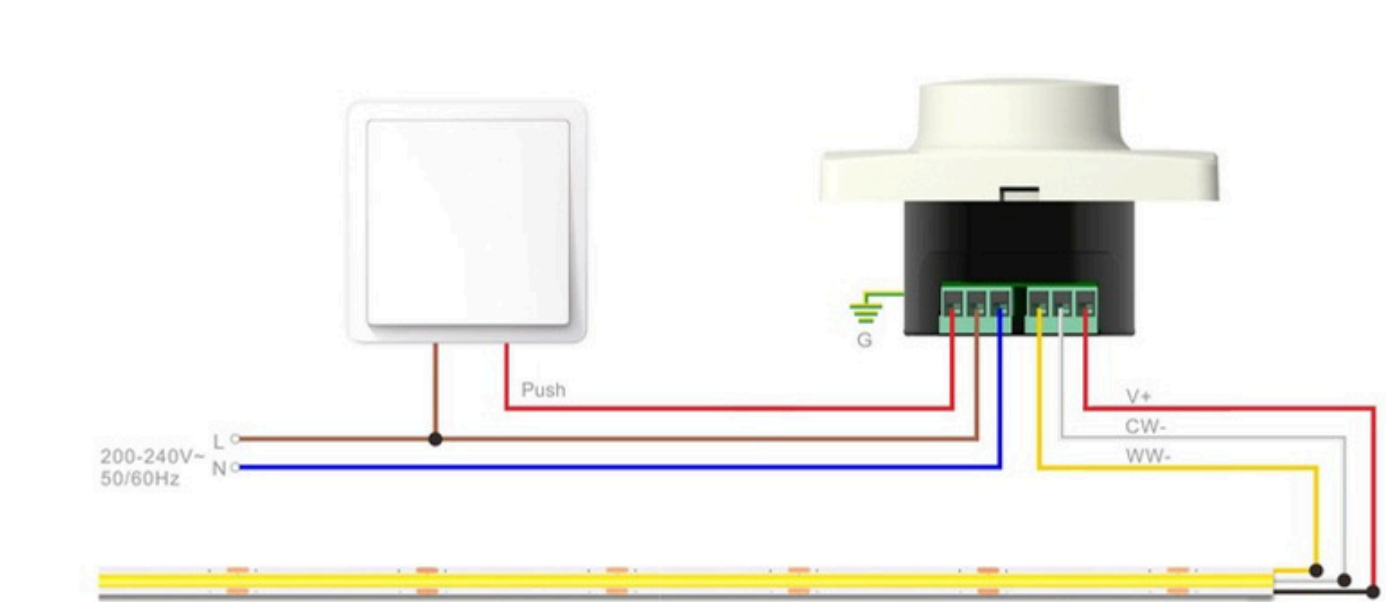
1. Any other requests, we can customize.
2. Please ensure that the connection is correct.

Connecting Diagram

SDD-EU-CCT model for standard dimming system

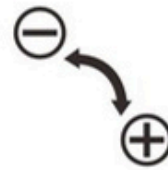
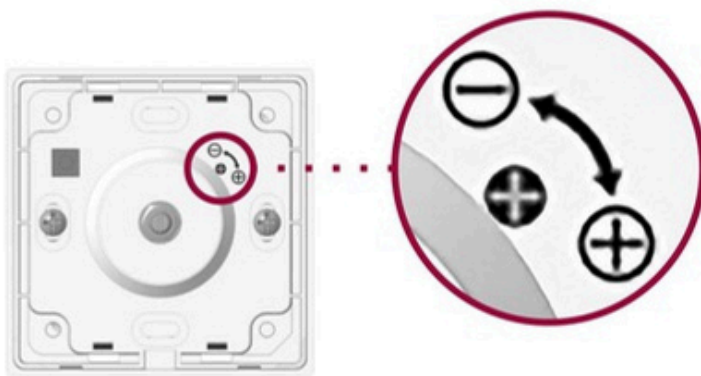


SDD-EU-CCT model for PUSH dimming system



Knob to adjust the voltage

Clockwise rotation of the high voltage



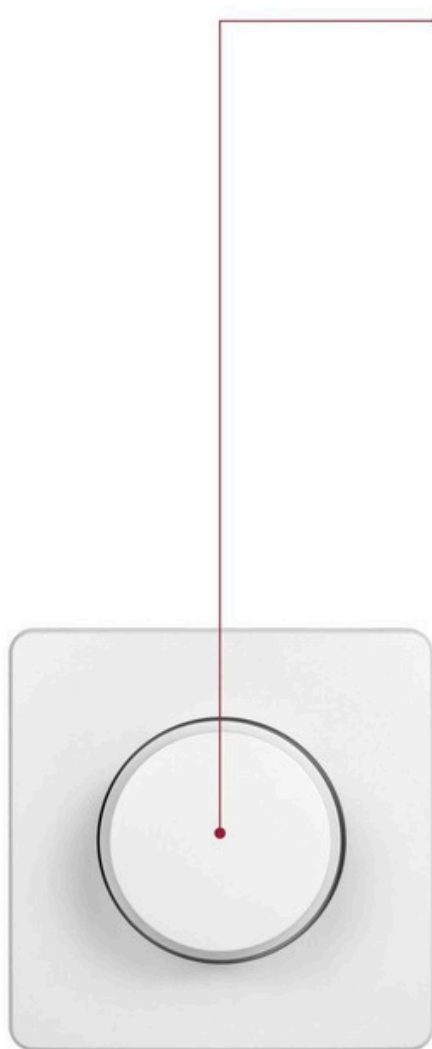
Output Volt. Adjustment

12V output volt. : 12-13. 5V

24V output volt. : 24-26V

48V output volt. : 48-50V

Dimming and Operation



SDD-EU-CCT Series

Knob dimming

- When clicking, the dimmer can on or off, and the knob can adjust the brightness at this time.
- When double-clicking, the dimmer switches to the color temperature value, and the knob can adjust the color temperature.
- After one minute not operating automatically restore to adjust the brightness mode.
- Double-click to switch between adjusting brightness and color temperature



Instructions

- 1 This driver+dimmer 2 in 1 should be installed by qualified and professional person.
- Please make sure the driver+dimmer 2 in 1 is installed with adequate ventilation around it to allow for heat dissipation.
- 2 Ensure that connection is correct to avoid LED light or driver+dimmer 2 in 1 be damaged.
- If the driver+dimmer 2 in 1 cannot work normally, don't maintain privately.

3

•

4 Have any questions, please contact with SCPOWER/SURETRON.

Please visit our website or contact us for more information! www.scpower.net.cn/en