



Model	Item Code	Output current	Input current	Input power	Output power range	PF	Efficiency	Output voltage	No load voltage
CC44W700-1050	126881	700mA	0.16A	36.2W	2.3-6.8W	0.95	88%	27-45V	55V
		750mA	0.17A	38.6W	3.0-9.0W				
		800mA	0.18A	41.3W	3.8-11.3W				
		850mA	0.19A	43.4W	4.5-13.5W				
		900mA	0.20A	42.9W	5.3-15.8W		89%	27-42V	
		950mA	0.21A	45.3W	6.0-18.0W				
		1000mA	0.22A	47.7W	6.8-20.3W				
		1050mA	0.23A	49.7W	7.5-22.5W				

*** Test result @230V, 50Hz, Full Load.**

1. Parameters

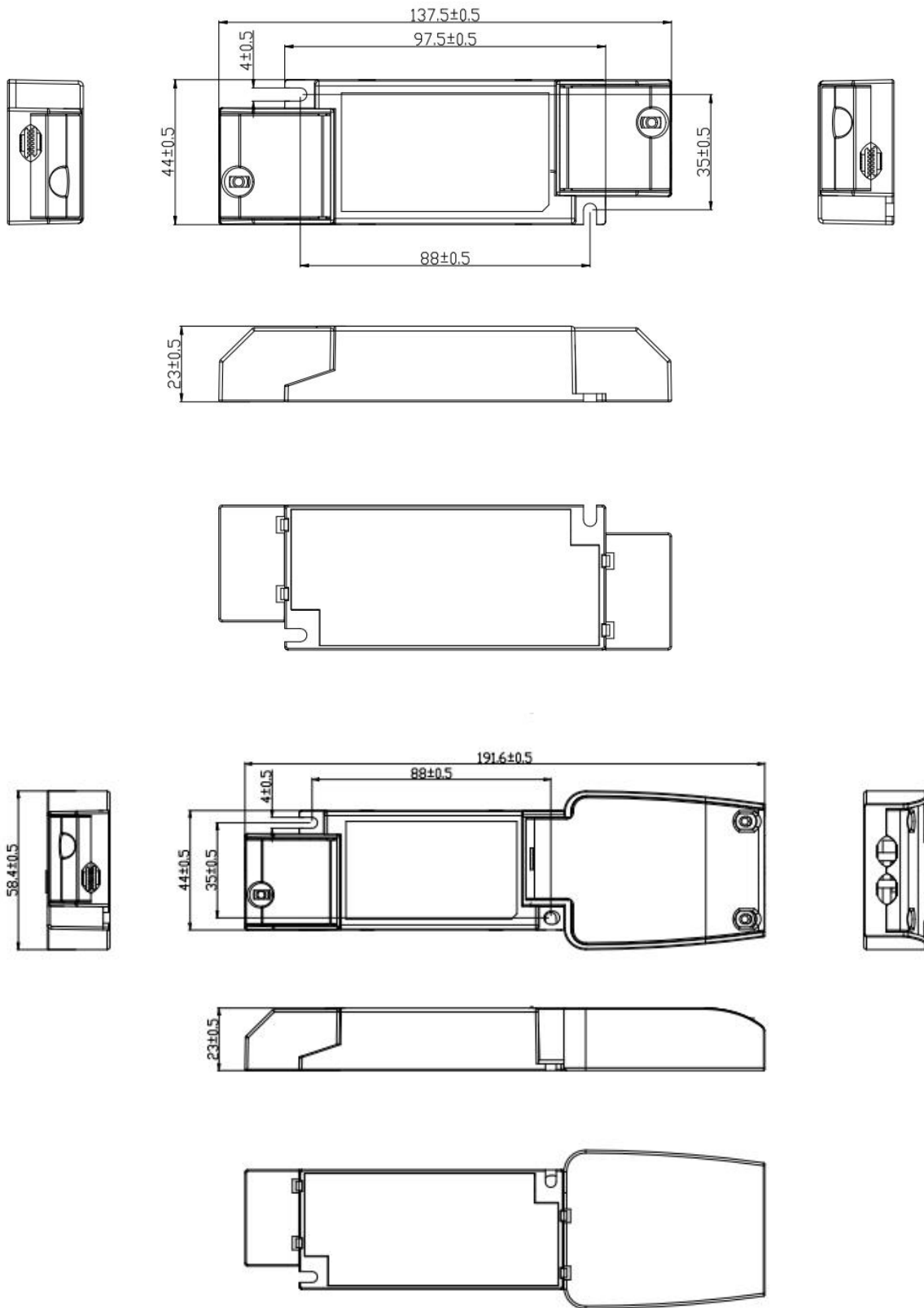
Category	Item	Technical Norm
Features	Output Type	Constant Current
	IP Grade	IP20
	Insulation Class	Class II
Input	Rated Input Voltage	220-240VAC
	Range of Input Voltage	198-264VAC
	Range of DC Input Voltage	170-276VDC
	Frequency	50/60Hz
	Input Current	≤0.130A
	Input Power	≤23W
	Power Factor	≥0.90 (230VAC , fullload)
	THD	≤ 10% (230VAC , fullload)
	No-load Power Consumption	≤0.5W @230VAC
	Inrush Current	≤21A/ 180us (230VAC,Full-load)
	Connected quantity of 10A Breaker	19pcs/type A ; 31pcs/type B ; 50pcs/type C
Connected quantity of 16A Breaker	31pcs/type A ; 50pcs/type B ; 80pcs/type C	
Connected quantity of 20A Breaker	39pcs/type A ; 63pcs/type B ; 101pcs/type C	

Output	Current Accuracy	±5%
	Max. Output Power	22.5W
	Started Delay Time	≤0.5S (230VAC , full load)
	Current Ripple	±3% (Imax-Imin) / (Imax+Imin)
	PSTLM	≤ 1
	SVM	≤0.4
Protection	Short Circuit Protection	Auto Recovery
	Overload Protection	Auto Recovery
	No-load Protection	Auto Recovery
	Insulation voltage	I/P to O/P , 3KVac/1min
	Insulation resistance	>100M ohm @ 500VDC
	Leakage current	I/P to O/P < 250 μA
Environment	Ta/Operation Temperature	7-22.5W: -20 ... +45°C;
	Ts/Storage Temperature	-40 ... +85°C
	Tc/Enclosure Temperature	85°C
	Humidity	10%.... 90%RH
	Atmosphere	86-108KPa
Construction	Connection Method	Push-in Terminal
	Installation	Build-in & Independent
	PRI Wire preparation	PVC, VDE certificated, 0.5- 1.5mm ² , with 8mm tin
	SEC Wire preparation	0-0.8±0.05m (The EMC test results were achieved at approximately 0.8 meters) (the length required by the standard). If there are any data differences, please test according to the length required by the standard)
	Dimension	Independent:137.5*44*23mm (L*W*H) Built in:97.5*44*23mm(L*W*H)
Standards	Certification	CE/ENEC
	Safety Standards	EN61347- 1,EN61347-2- 13
	EMC Standards	EN55015,EN61000-3-2,EN61000-3-3,EN61547
	Performance	EN62384
	Surge	L-N/ 1.5KV
Others	RoHS	Complied to 2011/65/EU
	Life Time	50000h Tc=85°C
		75000h Tc=75°C
		100000h Tc=70°C
Warranty	5years , F.R. <10%	

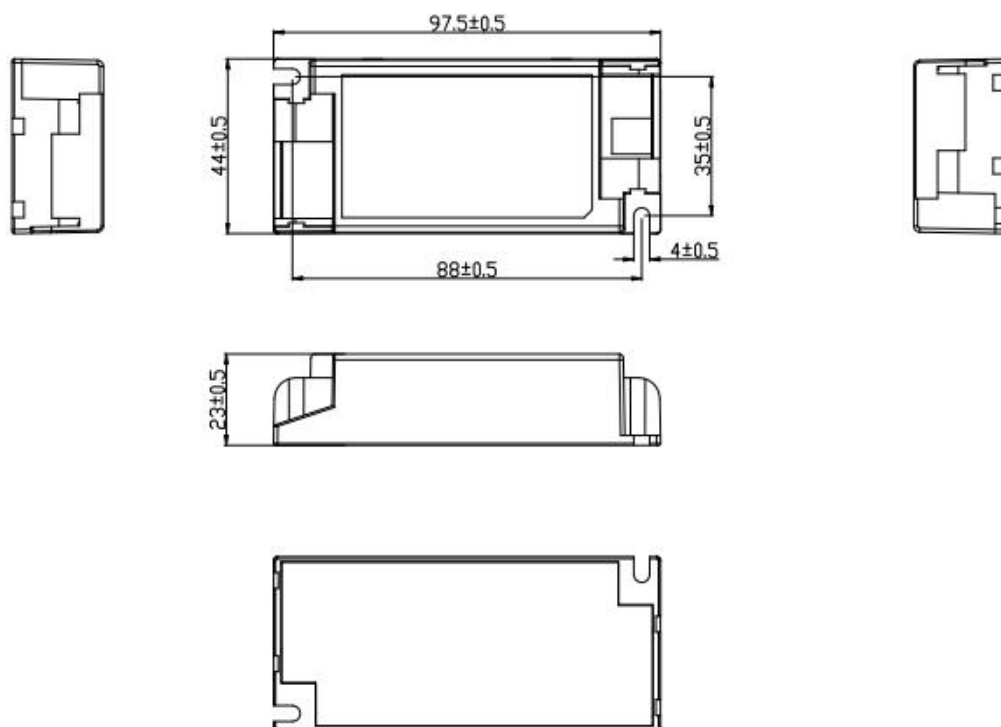
Remark:

- 1.All Parameters, if not specified, are measured at 230VAC/50Hz and 25°C ambient temperature.
- 2.LED Driver is a component of the luminaires. Luminaires and wire layout will affect the EMC, please check the EMC with end products again.
3. Please make sure Tc under Lifetime condition when long term operate under DC input.
4. Light output level in DC operation: (factory default = 100 % , EOFi = 1).

2. Dimension



Built in type:



3. Label

KGP Electronics GmbH CC44W700-1050 126881 Constant Current LED Power Supply
 Hueckstraße 19
 DE-58511 Lüdenscheid

PIN1	PIN2	PIN3	I _{rated} [mA]	P _{rated} [W]	U _{rated} [V]	U _N /f _N	I _N [A]	t _a [°C]	t _c [°C]	λ
OFF	OFF	OFF	700	31.5	27-45	220-240V 0/50/60Hz	0.16	-20...+45	85	0.95
ON	OFF	OFF	750	33.7			0.17			
OFF	ON	OFF	800	36.0			0.18			
ON	ON	OFF	850	38.2			0.19			
OFF	OFF	ON	900	37.8	27-42		0.20			
ON	OFF	ON	950	39.9			0.21			
OFF	ON	ON	1000	42.0			0.22			
ON	ON	ON	1050	44.1			0.23			

PRI ~
 ● L
 ● N
 OFF→ON
 1
 2
 3

EN 05
 CE
 UK CA EAC
 EL
 wirepreparatio
 8mm wire 0.5-1.5

- ●
 + ●
 SEC =
 U_{out} = 55V
 LED Only
 SELV

4. Packing information

Built-in type

Carton L*W*H(mm)	Pcs/Carton	Net weight/ Pcs(kg)	Net weight/ Carton(kg)	Gross weight / Carton(kg)
398*230*150	100	0.084	8.4	9.6

Small side cover

Carton L*W*H(mm)	Pcs/Carton	Net weight/ Pcs(kg)	Net weight/ Carton(kg)	Gross weight / Carton(kg)
500*195*260	600	0.0087	5.3	6.71

Large side cover

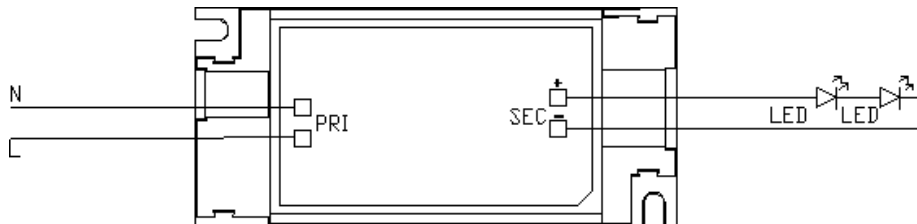
Carton L*W*H(mm)	Pcs/Carton	Net weight/ Pcs(kg)	Net weight/ Carton(kg)	Gross weight / Carton(kg)
375*315*385	300	0.041	12.3	14.3

5. Ordering data

Model No	Item code
CC44W700-1050	126881
SR_CC21-30-44-80	147921
SR_CC21-30-44-80_3POL	147931
SR_CC21-30-44-80_5POL	147941

6. Wiring Diagram

Built in type:



7. Revision history

Date	Version	Remark
2023-06-27	V1.0	Initial release.
2023-07-19	V2.0	Secondary version
2023-08-18	V3.0	Font & format adjustment
2023-08-31	V4.0	Change Tc to 85°C
2025-08-03	V5.0	Add item code