

2.5mm²/ Mini quickterminal blockconnector

Model: LAS-287-2/3
 Housing: PA/PC
 Contact: copper+stainless steel
 Specification: 450V T85
 Flammability: UL94V -2
 Wire range: 0.2-2.5mm²

Certification:     

2.5mm²/ Mini wire connector 2.5mm²

Model: LAS-261
 Housing: 2.5mm²
 copper+stainless steel
 Specification: 24A 450V (ICEC)
 Flammability: UL94V-2
 Wire range: 0.5-2.5mm² rigid wire
 0.5-1.5mm² stranded wire

Certification:   

4mm²/Quick terminal block connector

Model: LAS-262/263/265
 Housing: PA/PC
 Contact/copper+stainless steel
 Specification: 20A600VT105 (UL)
 32A450VT85 (IEC)
 Flammability: UL94V -2
 Wirerange: 24-12AWG / 0.2-4.0mm² rigid wire
 0.2-2.5mm² stranded wire

Certification:      

6mm²/Wire connector 6mm²

Model: LAS-266-2/3/5
 Housing: PA/PC
 Contact: copper+stainless steel
 Specification: 30A 600V T85(UL)
 41A 450V T105(IEC)
 Flammability: UL94 V-2
 Wire range: 20-10AWG/0.5-6.0mm²

Certification:    

4mm²/Quickterminal blockconnector

Model: LAS-281/282/283
 Housing: PA/PC Contact: copper+stainless steel
 Specification: 20A 300V T105 (UL)
 20A 600V T105 (LAS-281)
 32A 450V T85 (IEC)

Flammability: UL94V -2
 Wire range: 20-12AWG / 0.5-4.0mm²

Certification:      

2.5mm²/Rigid wire connector

Model: LAS-252/253/254/255
 Housing: PC
 Contact: copper+stainless steel
 Specification: 24A 300V T105 (UL)
 24A 450V T110 (IEC)

Flammability: UL 94V-2
 Wire range: 14-20AWG /0.5- -2. rigid wire /1.5-2.5 stranded wire

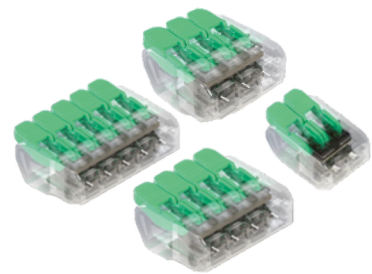
Certification:     

4mm²/Rigid wire connector 4mm²

Model: LAS-233-2/3/4/5, LAS-233A-6/8
 Housing: PC
 Contact: copper+stainless steel
 Specification: 30A 600V T85(UL)
 32A 450V T105(IEC)

Flammability: UL94 V-2
 Wire range: 20-12AWG/0.5-4.0mm²
 rigid wire / soldering wire

Certification:    





NEMA Socket

Model: LAS-M713-B
 Item: 3P waterproof photocontrol base without signal
 5P/7P waterproof photocontrol base with signal
 Specification: 15A 480V 50/60Hz -40°C-70°C
 Wire range: 14AWG 15A; 16AWG 10A; 18AWG 7A
 IP grade: IP66

Certification:



/NEMA Split type socket

Model: LAS-M713-B 0J-M713-B split rotary style
 Item: 3P waterproof photocontrol base without signal
 5P/7P waterproof photocontrol base with signal
 Specification: 15A 480V 50/60Hz -40°C-70°C
 Wire range: 14AWG 15A; 16AWG 10A; 18AWG 7A
 IP grade: IP66

Certification:



Twist lock waterproof photocontrol cap

Model: LAS-M715-B
 Specification: 120V / 208- 277V 1000W(osram lamp load)
 120V / 208- -277V 1000W(rectifier load)
 120V 8A / 208- 277V , 5A (LED
 rectifier) -40°C-70°C

IP grade: IP66

Certification:



Twist lock waterproof photocontrol cap

Model: LAS-M715-B
 Specification: 120V/208-277V 1000W(osram lamp load)
 120V/208--277V 1200VA(rectifier load)
 120V 8A ; 208-277V 5A(LED rectifier)

Operating Temperature: -40°C-70°C

IP grade:

Certification:

Twist lock waterproof shorting cap

Model: LAS-M715-A/LAS-M715-C
 Specification: 15A 480V 50/60Hz
 -40°C-70°C

IP grade: IP66

Certification:



Street light power off protection connector

Model: LAS29
 Housing: PA comply with RoHS.PAHs.SVHC
 Contact: nickel brass Specification: 16A 450V
 Flammability: 850°C -40°C -155°C/GWT 850°C -40°C -155°C
 Wire range: 12-20AWG /0.75-2.5mm²



Model: LAS29-2
 Housing: PA comply with RoHS.PAHs.SVHC
 Contact: nickel brass
 Specification: 16A 450V
 Flammability: 850°C-40°C-155°C/GWT850C-40C-155C
 Wire range: 12-20AWG/0.75-2.5mm²



Model: LAS29 mini
 Housing: PA comply with RoHS.PAHs.SVHC Contact : nickel
 brass
 Specification: 16A 250V
 Flammability: *850°C -40°C -155°C/GWT 850°C -40°C -155°C
 Wire range: 16-20AWG /0.5-1.5mm²



Model: LAS29-5
 Housing: PA comply with RoHS.PAHs.SVHC
 Contact: nickel brass
 Specification: 16A 450V
 Flammability: 850°C -40°C -155°C/GWT 850°C -40°C -155°C
 Wire range: 12-20AWG /0.75-2.5mm²

Certification: E481743

LAS-M716/M716S

/Zhaga socket with wire

Material: PBT,
Specification: 24V(30Vmax), 1.5A, 50/60Hz
Flammability: V0
Wire range: 22-18AWG(0.34-0.75mm²)
IP grade: IP66;
Impact grade:IK09 High pressure resistance:
1100V/min(inner), 10kV/min(outer)
Operating temperature: -40 to 70°C
Product size: 0J-M716(30x29mm), 0J-M716-A(30x22.3mm)

Certification:     

LAS-M716A/M716A

/Zhaga socket plug type

Material: PBT,
Specification: 24V(30Vmax), 1.5A, 50/60Hz
Flammability: V0
Wire range: 22-18AWG(0.34-0.75mm²)
IP grade: IP66;
Impact grade:IK09 High pressure resistance:
1100V/min(inner), 10kV/min(outer)
Operating temperature: -40 to 70°C
Product size: 0J-M716A(30x26.8mm), 0J-M716A-S(30x22.3mm)

Certification:     

LAS-M716A/M716A-or)

Material: PBT
Specification: 24V(30Vmax), 1.5A, 50/60Hz
Flammability: V0 Wire range: 22-18AWG(0.34-0.75mm²)
Wire range: 5-8mm;
IP grade:IP66
Impact: IK09; High pressure resistance
1100V/min(inner)10kv/min(outer) Operating
temperature: -40 to 70°C
Product size: 30x54mm

Certification:     

LAS-M716-3N/3Pin Photocontrol Base

Model: LAS-M716-3N
Size: 30*22.3*19.3mm
Specification: Max1.5A 30Vac
Dielectric Strength: 1.1KV/1MIN (inner)
Operating Temperature Range: PBT for T125
IP Rating: IP66
Impact grade: IK09
Environmental Compliance: RoHS 2.0 Complies with RoHS 2.0

Certification:     



LAS-M718

series photo cell base and cover

Material: PC+PBT,
Specification: 24V(30Vmax), 1.5A, 50/60Hz
Flammability: V0
Wire range: 22-18AWG(0.34-0.75mm²);
IP grade: IP66
Impact grade: IK09;
High pressure resistance: 1100V/min(inner),
10kV/min(outer)
Operating temperature: -40 to 70°C
Product size: 0J-M718-A1(50x17mm),
0J-M718-A2(Φ50x31.7mm)

Certification:    

LAS-M718

series photo cell base and cover

Material: PC+PBT
Specification: 24V(30Vmax), 1.5A, 50/60Hz
Flammability: V0
Wire range: 22-18AWG(0.34-0.75mm²)
IP grade: IP66
Impact grade: IK09;
High pressure resistance: 1100V/min(inner),
10kV/min(outer)
Operating temperature: -40 to 70°C
Product size: 0J-M718-B1(80.7x31.7mm),
0J-M718-B2(80.7x45mm)

Certification:    

LAS-M715H-5P/7P

/ Photocell Base Assembly

Rated Voltage: 120-277VAC
Rated Frequency: 50/60Hz
Rated Load: 1000W 1000W Tungsten Lamp
1200VA / 1200VA Ballast Lamp
@120VAC / 8A Electronic Ballast Lamp
@120VAC5A
@208-277VAC / 5A Electronic
Ballast Lamp @208-277VAC
Operating Temperature: -40°C ~ +70°C
Impact Rating: IK08 UV
UV Resistance: fl Level Protection Rating: IP 66
Environmental Requirement: RoHS 2.0 Complies with RoHS 2.0





/Quick plug type spring connector

Model: LAS-821/831/841/851
 Housing: PC+PA / PC+PP
 Contact: copper nickel
 Specification: 6A-24A 450V T110/T85 (IEC)
 15A 300V T115 (UL)
 20A 300V T110 (PSE)
 Flammability: 850°C/GWT 850°C
 Wire range: 0.5-2.5mm² / 20-14AWG (UL)
 Certification:



/Mini plug type spring connector

Model: LAS-8621/8631
 Housing: PC+PA/ PC+PP
 Contact: copper+stainless steel nickel
 Specification: 17.5A 450V T110/T85
 Flammability: 850°C/GWT 850°C Wire range:
 0.5-1.5mm²
 Certification:



/Double plug type spring connector

Model: LAS-862/863/864/865
 Housing: PC+PA / PC+PP (CQC)
 Contact: copper nickel
 Specification: 6A-24A 450V T110/T85
 (CQC)
 Flammability: 850°C/GWT 850°C
 Wire range: 0.5-2.5mm²
 Certification:



/Slim plug type spring connector

Model: LAS-838 Series
 Housing: PC+PA/ PC+PP
 Contact: copper nickel
 Specification: 6A-24A 450V T110/T85
 (IEC) 15A 300V T115 (UL)
 Flammability: 850°C/GWT 850°C
 Wire range: 0.5-2.5mm² / 20-14AWG (UL)
 Certification:



/Quick plug type spring connector

Model: LAS-836
 Housing: PC+PA/ PC+PP
 Contact: copper nickel
 Specification: 6A-24A 450V T110/T85
 (IEC) 15A 300V T115 (UL)
 Flammability: 850°C/GWT 850°C (UL)
 Wire range: 0.5-2.5mm² / 20-14AWG
 Certification:





/2pins/3pins Junction box

Model: LAS-3218/3318.
 Housing: PA/PP
 Contact: copper nickel
 Specification: 17.5A 250V T110/T85
 Flammability: 850°C/GWT 850°C
 Wire range: 0.75-1.5mm²

Certification:    



IP44 /Ip44 Junction box

Model: LAS-3319
 Housing: PA/PP
 Contact: copper nickel
 Specification: 17.5A 250V T100/T85
 Flammability: 850°C/GWT 850°C
 Wire range: 0.75-1.5mm²

Certification:    



IP44 /Ip44 Junction box

Model: LAS-3518
 Housing: PA/PP
 Contact: copper nickel
 Specification: 17.5A 250V T100/T85
 Flammability: 850°C/GWT 850°C
 Wire range: 0.75-1.5mm²

Certification:    



IP54 /Ip54 Junction box

Model: LAS-3618
 Housing: PA/PP
 Contact: copper nickel
 Specification: 17.5A 250V T100/T85
 Flammability: 850°C/GWT 850°C
 Wire range: 0.75-1.5mm²

Certification:    



PA /terminal blocks

Model : LAS-PA7/PA9/PA12-1~12
 Housing: PA/PP
 Copper/Zinc MAX: 1.5mm²(PA7), 2.5mm²(PA9), 6.0mm²(PA12)
 Specification: PA7: IEC: 17.5A, 450Vac, T85/T110
 UL: 20A, 300Vac, T115, 12-20AWG
 PA9: IEC: 24A, 450Vac, T85/T110
 UL: 30A, 600Vac, T115, 12-20AWG
 PA12: IEC: 41A, 500Vac, T85/T110
 UL: 35A, 600Vac, T115, 10-18AWG

Size: PA7: 96.7*17.2*14.4mm
 PA9: 118.2*20.2*16.3mm
 PA12: 141.8*24.3*19.1mm
 Flammability :UL94V-0 GWT 850°C

Certification:

     E481743





/DC quick connector-1pin

Model: LAS-602B-1P
Housing: PC
Contact: phosphor copper
Specification: 6A 250V T85 (ICE)
6A 125V (UL)
Flammability: UL94V-2
Wire range : 0.34-1.0mm²/22-16AWG

Certification:    E474196



/quick connector

Model: LAS-603
Housing: PC
Contact: phosphor copper+stainelss steel
Specification: 10A 250V T40 (CE) 10A 125V T80 (UL)
Flammability: UL94V-2
Wire range: 16-18AWG / 0.75-1.0mm²

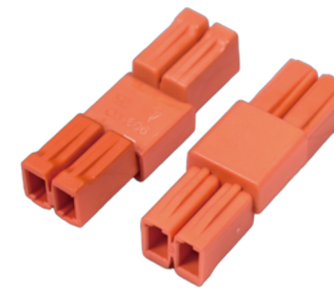
Certification:   E474196



/DC quick connector-2pins


Model: LAS-602B-2P
Housing: PC
Contact: phosphor copper
Specification: 6A 250V T85 (ICE)
6A 125V (UL)
Flammability: UL94V-2
Wire range: 0.34-1.0mm²/22-16AWG

Certification:   E474196 



/quick connector

Model: LAS-606
Housing: PA
Contact: phosphor copper
Specification: 6A 300V T80/T125
Flammability: UL94V-2/UL94V-2/0
Wire range: 18-22AWG

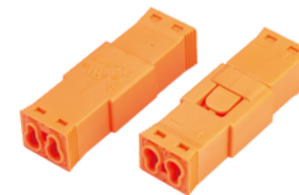
Certification:  E474196



/DC quick connector-3pins

Model: LAS-602B-3P
Housing: PC
Contact: phosphor copper
Specification: 6A 250V T85 (ICE)
6A 125V (UL)
Flammability: UL94V-2
Wire range : 0.34-1.0mm²/22-16AWG

Certification:   E474196 



/quick connector

Model: LAS-616
Housing: PA
Contact : phosphor copper+steel sheet
Specification : 6A 125V T115
Flammability: UL94V-2
Wire range: 16-22AWG

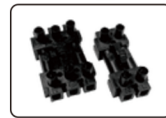
Certification:  E481743



/High current connector-2/3pins

Model: LAS-607/608
 Housing: PC fire-resistant PC
 Contact: copper
 Specification: 16A 250V -10°C-135°C
 Wire range: 0.75-1.5mm²

Certification:



/Push type multi core plug in connector

Model: LAS-6019
 Housing: PC+PA
 Contact:copper+stainless steel
 Specification: 24A 450V -40°C -135°C
 Flammability: 850°C/GWT 850°C
 Wire range: 0.5-2.5mm²

Certification:



/Multi-in and multi out connector

Model: LAS-275
 Housing: PA/PC
 Contact: copper+stainless steel
 Specification: 24A 450V T110
 Flammability: glow wire 850°C
 Wire range: upper plug hole: 0.5- 2.5mm²
 lower plug hole: 0.5- 2.5mm²(rigid wire)

Certification:



/2 in 4 out/3 in 6 out male-femal connector

Model: LAS-626/636
 Housing: PA-PC
 Contact: copper+stainless steel
 Specification: 6A 600V (UL)
 6A 450V T105 (IEC)
 Flammability: UL94V -0
 Wire range: 2/3: 18-20AWG / 0.2- 0.75mm² 4/6:
 12-18AWG / 0.75-4.0mm²

Certification:



/Mini SMD terminal

Model: LAS-2058 - 1/2/3p
 Housing: LCP
 Contact: phosphorcopper
 Specification: 3A 300V
 Wire range: 20-22AWG

SMD SMD terminal

Model: LAS-2068- 1/2/3p
 Housing: LCP
 Contact: phosphorcopper
 Specification : 6A 300V T65 (UL)
 6A 160V -40°C-155°C (TUV)
 Wire range: 0.2-0.75mm² / 18-
 24AWG
 Certification: E481743



SMD

/SMD terminal(big size)

Model: LAS-2069- 1/2/3p
 Housing: LCP
 Contact: Phosphorcopper tin plating
 Specification: 17.5A 250V -40°C -155°C
 Soldering method: 240°C/2S 2≤5S
 /240°C/2S 2times≤5S(reflow
 soldering)
 Soldering temperature:350°C/5S (manual soldering)
 Wire range: 16-20AWG / 0.5-1.5mm²

Certification:







/Mini 1 in 1 out waterproof junction box



Model: LAS-5618
 Housing: PC
 Specification: 17.5A 450V -25°C -60°C
 Flammability: 850°C/GWT 850°C
 Wire outer diameter: 4-8.5mm
 Wire range: Max 1.5mm²
 IP grade: IP67
 Certification:  



/1 in 1 out waterproof junction box



Model: LAS-5718-A
 Housing: PA
 Specification: 17.5A 450V -25°C -60°C
 Flammability: 850°C/GWT 850°C
 Wire outer diameter: 4-8.5mm
 Wire range: Max 1.5mm²
 IP grade: IP65
 Certification:  

/1 in 2 out waterproof junction box



Model: LAS-5718-B
 Housing: PA
 Specification: 17.5A 450V -25°C -60°C
 Flammability: 850°C/GWT 850°C
 Wire outer diameter: 4-8.5mm
 Wire range: Max 1.5mm²
 IP grade: IP65
 Certification:  



/2 in 2 out waterproof junction box



Model: LAS-5818-A
 Housing: PC
 Specification: 24A 450V -25°C -60°C
 Flammability: 850°C/GWT 850°C
 Wire outer diameter: 5-10mm
 Wire range: Max 2.5mm²
 IP grade: IP68
 Certification:  

/1 in 2 out waterproof junction box



Model: LAS-5818-B
 Housing: PC
 Specification: 24A 450V -25°C -60°C
 Flammability: 850°C/GWT 850°C
 Wire outer diameter: 5-10mm
 Wire range: Max 2.5mm²
 IP grade: IP68
 Certification:  



Zhaga Book20

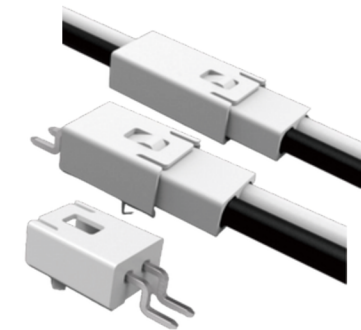
/Zhaga Book20 male-female with wire Poke-In Wire Termination

Model: LAS-682-M LAS-682-M Socket (male);
LAS-682-L/LAS-682-L Plug (Female)
Rated Voltage: 250Vac
Rated Current: 22AWG MAX 3A /20AWG MAX 5A /18AWG MAX 7A
Contact Resistance: 20mΩmax
Insulation Resistance: 500MΩ 500VDC
Dielectric Strength: 1.5KV/1min
Operating Temperature Range: -40°C~+105°C
Environmental Compliance: RoHS 2.0
/Complies with RoHS 2.0

Zhaga Book20

/Zhaga Book20 male-female Poke-In Wire Termination

Model: LAS-683-M /LAS-683-M Socket (male)
LAS-683-L /LAS-683-L Plug (Female)
Rated Voltage: 250Vac
Rated Current: 22AWG MAX 3A
20AWG MAX 5A 18AWG MAX 7A
Contact Resistance: 20mΩmax
Insulation Resistance: 500MΩ 500VDC
Dielectric Strength: 1.5KV/1min
Operating Temperature Range: -40°C~+105°C
Environmental Compliance: RoHS 2.0
/Complies with RoHS 2.0

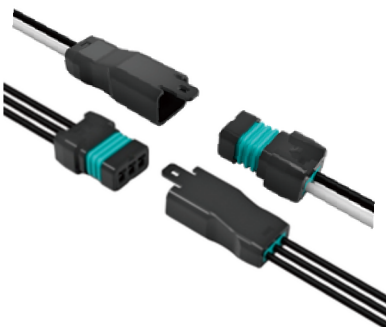


Zhaga Book20 SMT
/Zhaga Book20 SMT Wire Termination

Model: LAS-682-S SMT /LAS-682-S SMT Socket (male)
Rated Voltage: 250Vac
Rated Current: 22AWG MAX 3A /20AWG MAX 5A /18AWG MAX 7A
Contact Resistance: 20mΩmax
Insulation Resistance: 500MΩ 500VDC
Dielectric Strength: 1.5KV/1min
Operating Temperature Range: -40°C~+105°C
Environmental Compliance: RoHS 2.0
/Complies with RoHS 2.0
Additional Requirements: F > 50N
/Pin Retention Force F > 50N

LAS-686
/ IP68 Wire Termination

Model: LAS-686-2P/3P
Rated Voltage: 250Vac Rated Current:
20AWG 4A 22AWG 3A 24AWG 2A
Operating Temperature Range: -40°C~+105°C
Wire range: 20-24AWG
Wiring: riveting process
certification:



/Flip lock waterproof junction box

Model: LAS-26H-2 /LAS-26H-2 Waterproof box
Housing: PP
IP Rating: IP68
Size: 42.2*30.4*16.2mm
Compatible Terminals: LAS-262/233-2P
Wire range: 0.5mm²-4mm²
/0.5mm²-4mm² Solid and Stranded Wires
Operating Temperature Range: -50°C to 85°C



Certification:  



/Flip lock waterproof junction box

Model: LAS-26H-3 LAS-26H-3 Waterproof box
Housing: PP
IP Rating: IP68
Size: 42.2*36.2*16.2mm Compatible
Terminals: LAS-263/233-3P
Wire range: 0.5mm²-4mm² Solid and Stranded Wires

Operating Temperature Range: -50°C to 85°C

Certification:  



/Flip lock waterproof junction box

Model: LAS-26H-5 LAS-26H-5 Waterproof box
Housing: PP
IP Rating: IP68
Size: 42.2*47.8*16.2mm
Compatible Terminals: LAS-265/233-5P
Wire range: 0.5mm²-4mm²
/0.5mm²-4mm² Solid and Stranded Wires

Operating Temperature Range: -50°C to 85°C

Certification:  



/Mini dustproof junction box

Model: LAS-821H
 Housing: PC
 Flammability: 850°C/GWT 850°C
 Applicable connector inside: PA9-2/LAS-821



/Dustproof junction box

Model: LAS-821H LAS-821H split type
 Housing: PP
 Flammability: 850°C/GWT 850°C
 Applicable connector inside: PA9-2/LAS-821



/Dustproof junction box

Model: LAS-821H
 Housing: PP
 Flammability: 850°C/GWT 850°C
 Applicable connector inside: PA9-2/LAS-821



/Dustproof junction box

Model: LAS-862H
 Housing: PP
 Flammability: 850°C/GWT 850°C
 Applicable connector inside: PA9-2/LAS-821



/Dustproof junction box

Model: LAS-831H
 Housing: PP
 Flammability: 850°C/GWT 850°C
 Applicable connector inside: PA9-3/LAS-831



/Dustproof junction box

Model: LAS-863H
 Housing: PP
 Flammability: 850°C/GWT 850°C
 Applicable connector inside:
 PA9-3/LAS-831



/Dustproof junction box

Model: LAS-841H
 Housing: PP
 Flammability: 850°C/GWT 850°C
 Applicable connector inside:
 PA9-4/LAS-841