

Product data



Track Driver ALW Series TKC Max 42W(16C)

Knob Dim 3 phase 4 wire Constant Current LED Power Supply



	(mA)	300	350	400	450	500	550	600	650	700	750	800	850	900	950	1000	1050
1	OFF	ON	OFF	ON	OFF	ON	OFF	ON	OFF	ON	OFF	ON	OFF	ON	OFF	ON	ON
2	OFF	OFF	ON	ON	OFF	OFF	ON	ON	OFF	OFF	ON	ON	OFF	OFF	ON	ON	ON
3	OFF	OFF	OFF	OFF	ON	ON	ON	ON	OFF	OFF	OFF	OFF	ON	ON	ON	ON	ON
4	OFF	OFF	OFF	OFF	OFF	OFF	OFF	OFF	ON	ON	ON	ON	ON	ON	ON	ON	ON

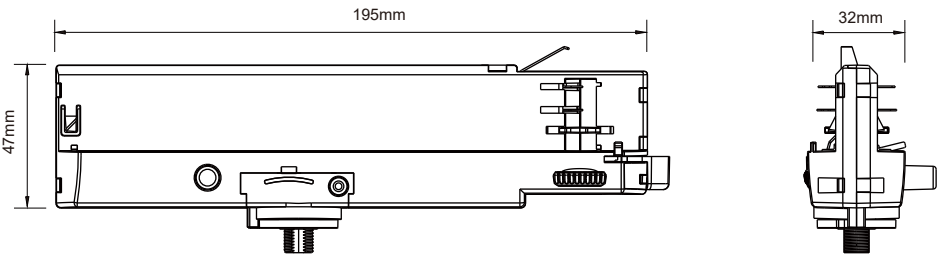


Features

- Built-in Track Adaptor
- Flicker free
- Power Factor Corrected (>0.9)
- Compatible with Brand Tracks, refer to data sheet page 3
- For luminaire of protection class I
- Temperature protection as per EN 61347-2-13 C5e
- Adjustable output current between 300-1050mA
- Power input on stand-by < 0.5 W
- Nominal lifetime up to 50,000 H or 5 years guarantee
- Over-temperature protection
- Over-load protection
- Short-circuit protection
- No-load protection
- Burst protection voltage 2 kV
- Surge protection voltage 1 kV (L to N)
- Casing color: Black / White / Grey



size



length	195 mm
width	32 mm
height	47 mm
Geometry (l x b x h)	195 x 32 x 47mm
Package size	59 x 25 x 21cm
Quantity	50pcs/ box

Product data

Electrical parameters

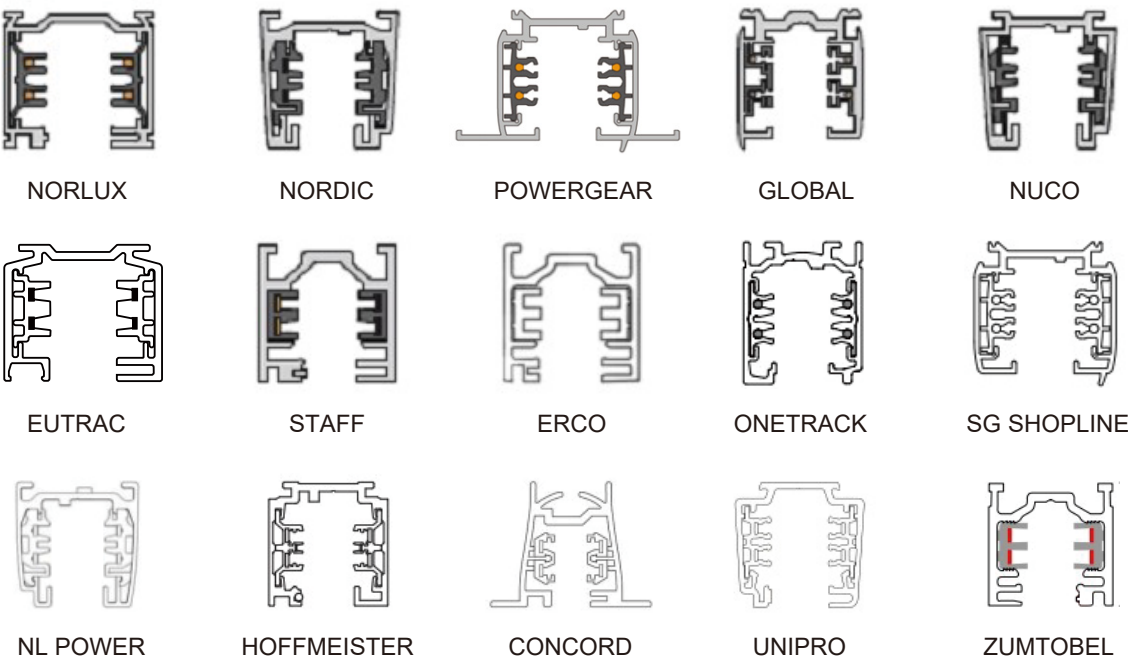
Nominal Input Voltage	220 – 240V ^{AC}
Line Current, nominal	0.2A MAX.
Mains Frequency	50/60 Hz
Rated Power factor	> 0.9 (full load) @ 230V
Power Loss in no load condition	<1W
Protection Class	I
Output Current	300-1050mA Dip Switch
Output voltage	8- 40V ^{DC}
(Remark)	Maximum <50V ^{DC}
Output Power	Maximum 42W
No-load proof	Yes
Short circuit & Overload protection	Automatic, reversible
Ambient temperature range, t ^a	-20 °C to +40 °C
Max. case temperature at t ^c point	85 °C
IP Code	IP20
Dimmable	Knob Dimming
Dimming Range	0.....100% full load condition at 230V
Color Change	C-CW-W
Lifetime (Remark)	50,000h or 5 years Fail rate < 3% at use of Under normal conditions
Cable cross section input side & output side	0.3-1.5mm
Wire preparation length Input side & output side	7-8 mm
Safety Standard	IEC 61347-1:2015 ; IEC 61347-1:2015/AMD1:2017 ; IEC 61347-2-13:2014 ; IEC 61347-2-13:2014/AMD1:2016
Radio interference Harmonic content Immunity	EN IEC 55015:2019 ; EN IEC 55015:2019/A11:2020 EN 61547:2009 ; EN IEC 61000-3-2:2019/A1:2021 EN 61000-3-3:2013/A2:2021
Surge capability	L-N:1000V
Galvanic isolation	3.75 kVrms
primary/secondary	SELV-equivalent

Wiring guidelines

- All connections must be kept as short as possible to ensure good EMI behaviour
- Max. length of output wires is 20 cm
- Secondary switching is not permitted
- Incorrect wiring can damage LED Driver
- It is not allowed to exceed the max ambient temperature (ta) stated on the device
- To avoid the damage of the Driver, the wiring must be protected against short circuits to earth (sharp edged metal parts, metal cable clips, louver, etc.)

Product data

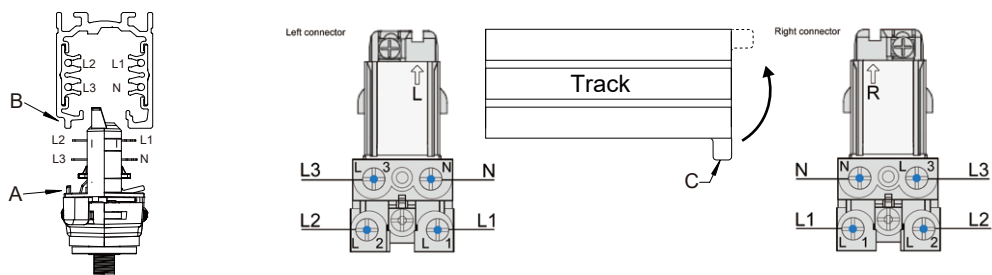
Phase Track Brand (for reference only)



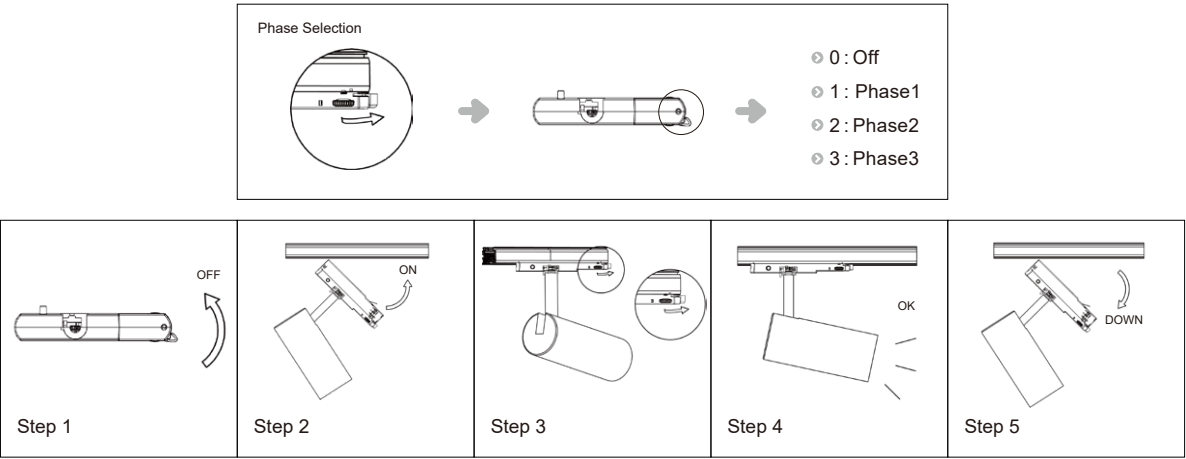
Installation Diagram

- Max. allowed weight of complete luminaire: 5 kg (50 N). It is valid for horizontal mounting of track system only
- The mechanical key (A) in the adaptor matches the groove (B) in the track. Rotate of about 90° the lever of the cam (C) until it reaches the locking position
- To open rotate the lever the opposite direction

Insert the adapter into the track

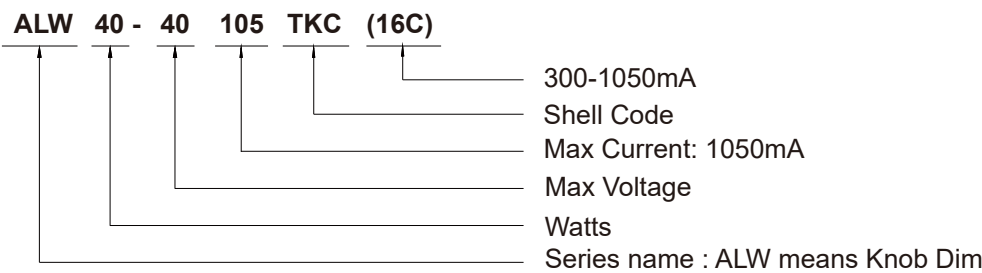


Mounting luminaire



Product data

Naming Rules



Model	Input Voltage(V)	Output current(mA)	Output Voltage(V)	PF	Efficiency	Flicker	Size(L x W x H)
ALW40-40105TKC(16C)	220-240V	300/350/400/450/ 500/550/600/650/ 700/750/800/850/ 900/950/1000/1050mA	8-40V	>0.9	88%	Flicker-Free	195 x 32 x 47mm

Additional information

- For more information,please contact ALLOOKING for clarification
- Lifetime declarations are informative and represent no warranty claim
- No warranty if device was opened
- Any upgrade or interpretation subject to ALLOOKING